

A Tiny Place That Is Hard to Touch



This film was part of a previous programme. The 2020 festival programme will be announced in May 2020.

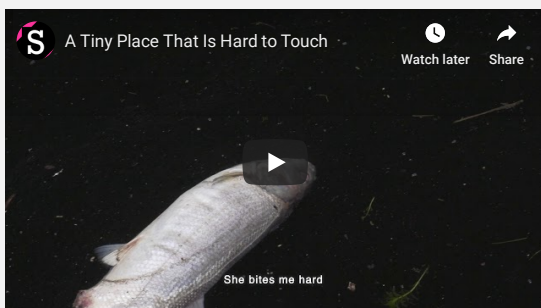


Year 2019 Duration 39 min

Science fiction and desire collide when an American researcher meets a Japanese translator. Clouds drift beyond the towering high rise blocks; down below, nature suffocates in a Tokyo river.

<http://www.shellysilver.com>

Director(s):	Shelly Silver
Producer(s):	Shelly Silver
Country:	USA
Language:	Japanese
Premiere status:	UK Premiere



Sat 8 June @ 09.15  
Showroom Cinema 1

